



Agecroft Road, Romiley, SK6 3HT

This refurbished two double bed roomed semi-detached house is sure to prove popular with first time buyers and buy-to-let investors alike. The property features a newly fitted kitchen, new carpets and fresh decoration throughout along with a re-wire. With gas fired central heating the accommodation includes an entrance hall, 18'8" through-living room, the newly fitted kitchen, first floor landing, two double bedrooms and a modern bathroom. Outside there is an enclosed rear garden to the rear and a gravelled garden to the front that adjoins a long driveway proving off-road parking. Tenure: Freehold. Council Tax Band: A. EPC rating: to follow.

Price Guide: £200,000



ENTRANCE HALL

THROUGH LIVING ROOM
18' 8" x 10' 8" (5.69m x 3.25m)



KITCHEN
12' 4" x 10' 0" max (3.76m x 3.05m)



FIRST FLOOR LANDING

BEDROOM ONE
12' 9" x 11' 0" (3.88m x 3.35m)



BEDROOM TWO
12' 9" x 10' 1" (3.88m x 3.07m)



BATHROOM
10' 6" max x 5' 8" (3.20m x 1.73m)

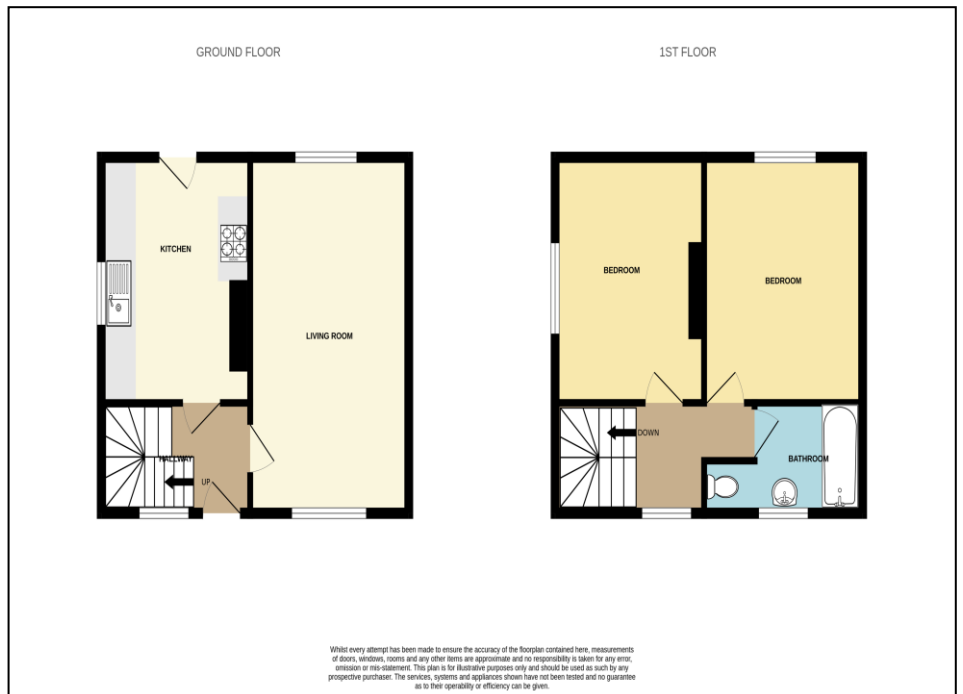


OUTSIDE



VIEWING ARRANGEMENTS

Viewing is strictly by appointment with Thomas Lardner Romiley Office - telephone number 0161 494 5136.



Thomas Lardner Estate Agents, which is a trading name of Romiley Residential Ltd, for themselves and for the vendors or lessors of this property whose agents they are give notice that: (1) all measurements are approximate and any plans provided are not to scale; (2) the particulars are set out as a general outline only for the guidance of intending purchasers or lessors, and do not constitute, nor constitute part of, an offer or contract; (3) we have not tested any apparatus, equipment, fixtures, fittings or services, and so cannot verify that they are in working order or fit for purpose; (4) solicitors should confirm moveable items described in these particulars are, in fact, included in the sale since circumstances change during marketing or negotiations.

T709 Printed by Ravensworth 01670 713330